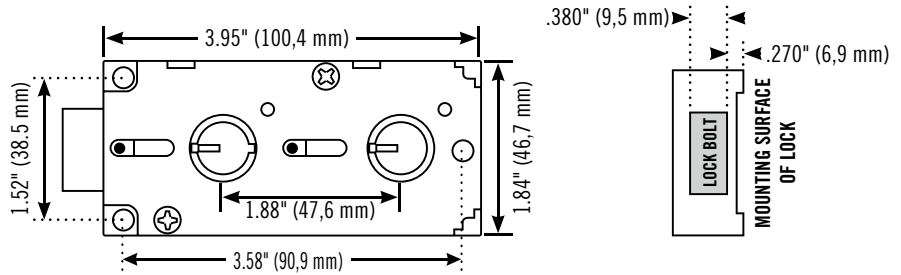


SARGENT AND GREENLEAF®

A Subsidiary of Stanley Security Solutions, Inc.

4500 Series Safe Deposit Locks

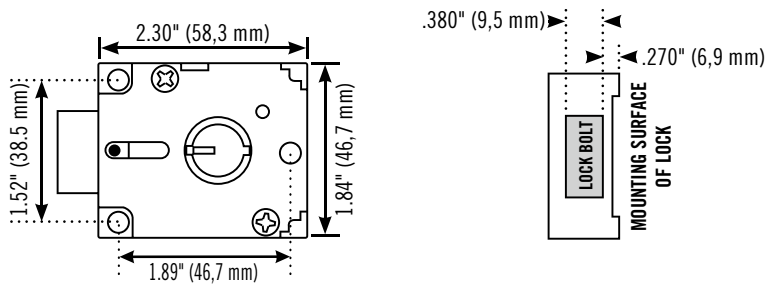
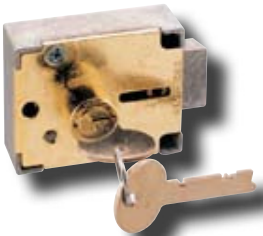


- The centerline design of the 4500 Series allows the same lock to be mounted either left-hand or right-hand.
- Factory matchwork is available on request to match many manufacturers' guard keys. A sample guard key must be provided.
- The 4500 Series is Listed by Underwriters Laboratories under Standard 437.

4500 Series

| Order Number | Lock Style | Renter Nose Diameter and Lever Type | Guard Nose Diameter and Lever Type | Nose Height |
|--------------|------------|-------------------------------------|------------------------------------|----------------|
| 4544-020 | centerline | .672" (17 mm) — changeable | .672" (17 mm) — changeable | 3/8" (9.5 mm) |
| 4545-004 | centerline | .672" (17 mm) — changeable | .672" (17 mm) — changeable | 1/2" (12.7 mm) |
| 4555-006 | centerline | .672" (17 mm) — changeable | .672" (17 mm) — fixed | 1/2" (12.7 mm) |
| 4565-004 | centerline | .672" (17 mm) — fixed | .672" (17 mm) — fixed | 1/2" (12.7 mm) |

4100 Series Cabinet Locks



- The 4100 Series is a collection of single nose changeable key cabinet locks.
- Four nose heights to accommodate different door thicknesses.
- Attractive brass plated cover and plug.
- Supplied with two matching keys.
- Can be mounted right-hand or left-hand.

4100 Series

| Order Number | Lock Style | Nose Height | Nose Diameter and Lever Type |
|--------------|------------|----------------|------------------------------|
| 4110-003 | 4100 | 1/8" (3,2 mm) | .672" (17 mm) — changeable |
| 4111-003 | 4100 | 1/4" (6,4 mm) | .672" (17 mm) — changeable |
| 4112-003 | 4100 | 3/8" (9,5 mm) | .672" (17 mm) — changeable |
| 4113-003 | 4100 | 1/2" (12,7 mm) | .672" (17 mm) — changeable |

